

# Hokulani Waikiki

2018 Sustainability Efforts

Presented by

Jennifer Agdeppa, Executive Housekeeper  
Mitch Yokoyama, Assistant General Manager



# Hokulani Waikiki

## by Hilton Grand Vacations Club



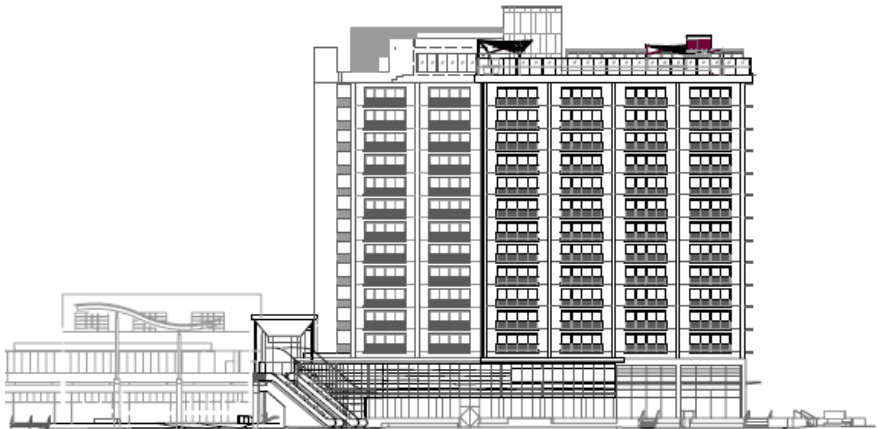
- ▶ Located on Waikiki Beach Walk
- ▶ 143 units, comprised of luxurious one bedroom suites
- ▶ Rooftop outdoor lounge with a plunge pool and multiple cabanas, lobby lounge; exercise facilities, business center
- ▶ Il Tappo Italian Wine Bar and Restaurant inside hotel lobby

# Achieved LEED Certification as Recognized by the U.S. Green Building Council



- ▶ Cooling towers reject heat through the process of evaporation, reducing water consumption by up to half a million gallons per year from reclaimed heat
- ▶ Reclaimed heat from cooling towers used to heat domestic water, heat the plunge pool, and for dehumidification systems

Substantial savings in purchased energy and reduced load on cooling towers



# Energy Savings

- ▶ Majority LED lighting throughout property
- ▶ Motion sensors for lights in back of house, offices and some public spaces
- ▶ Programmable lighting in public areas
- ▶ Dimmable lighting in guest rooms
- ▶ A/C systems equipped with occupancy sensors to shut off automatically when no motion is detected
- ▶ ENERGY STAR® rated electronics and appliances







Water Stations  
Added in Common  
Areas to Reduce  
Water Bottle Waste

Reusable Beverage  
Containers/Flasks  
provided to staff

# Added Recycling Pickup

- ▶ Commingled recycling of cardboard, newspaper, plastics and HI 5 beverage containers
- ▶ Larger 2 yard recycle bin
- ▶ Averaging 930lb monthly on recycled items



# Recycling in Guestrooms Common Areas and Back of House

- ▶ More recycling bins were added throughout the resort to encourage recycling
- ▶ Recycling bags inserted into all guest rooms with instructions



# Paper Waste



- ▶ Double sided printing
- ▶ Office paper recycling
- ▶ Printer paper products with 30% or higher recycled content
- ▶ Partial rolls of paper towels and toilet paper from guest room used in back of house areas



# Linen and Terry Repurposing

- ▶ Damaged linen and terry used as rags
- ▶ Sewed sheets into tote bags for housekeeper use
- ▶ Elephant sale of used items
- ▶ Donations when over stocked with damaged items



# Hokulani Garden



- ▶ Repurposed lifeless succulent plants from lobby living wall to a vacant space on property.
- ▶ Employees created a Hokulani Garden. Planted papaya, hawaiian chili pepper, spinach, bitter melon, and sweet potato leaves.

# Donations to Non-Profit Organizations in a Greening Effort to Reduce/Reuse and Help Our Community

- ▶ Donation Items:  
Linen, Towels, Furniture,  
Houseware Goods, Equipment,  
Soap & Bathroom Amenities
- ▶ Non-Profit Organizations:  
Helping Hands Hawaii,  
Department of Education,  
Hawaii Humane Society, Next  
Step Shelter, Family Promise  
Hawaii, Lanakila Pacific, Palama  
Settlement, Oahu SPCA, Malama  
O Ke Kai, Hina Mauka, and  
Makana O Ke Akua.



# Future Plans



- ▶ Retrofitting florescent lighting with LED in vanity mirrors
- ▶ Add water bottle refill station in the lobby
- ▶ Adding more public area recycling bins
- ▶ Donation of attic stock materials





# Green Business Award 2018-2019